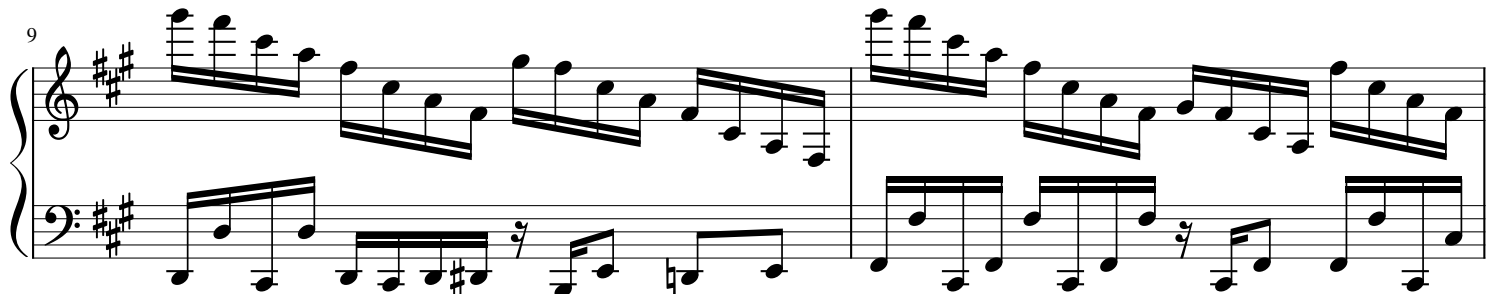
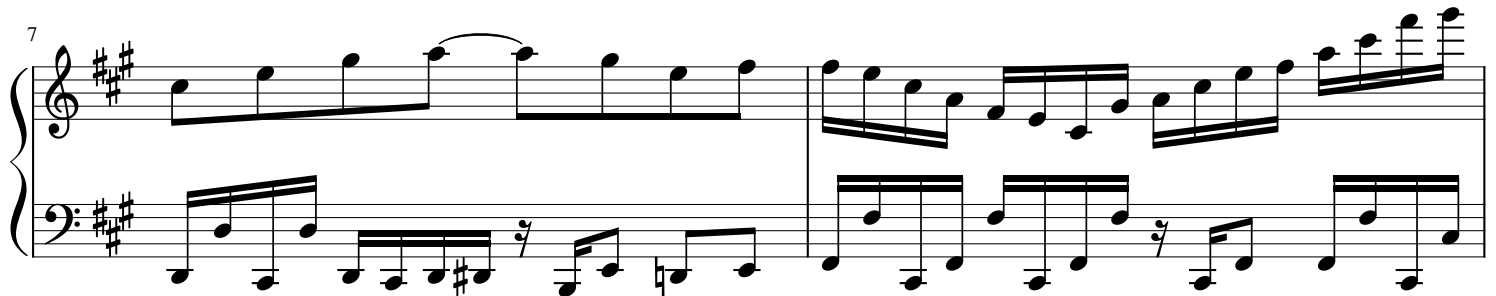
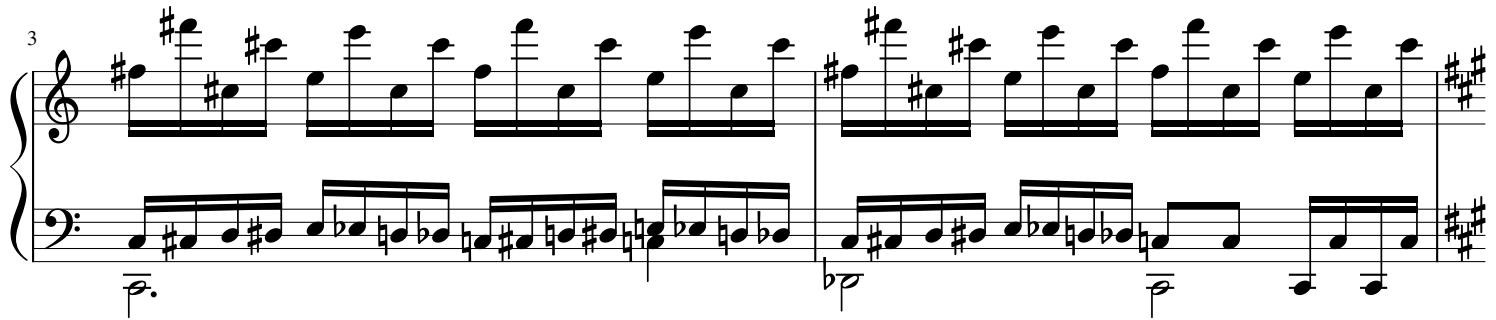


Boss Theme

from "Risky Woods"

José Antonio Martin Tello

arr. Mark Andrews



11

Measures 11-12. Treble clef: Melodic line with eighth and quarter notes. Bass clef: Rhythmic accompaniment with eighth and quarter notes. Key signature: Two sharps (F# and C#).

13

Measures 13-14. Treble clef: Melodic line with eighth and quarter notes. Bass clef: Rhythmic accompaniment with eighth and quarter notes. Key signature: Two sharps (F# and C#).

15

Measures 15-16. Treble clef: Melodic line with eighth and quarter notes. Bass clef: Rhythmic accompaniment with eighth and quarter notes. Key signature: Two sharps (F# and C#).

17

Measures 17-18. Treble clef: Melodic line with eighth and quarter notes. Bass clef: Rhythmic accompaniment with eighth and quarter notes. Key signature: Two sharps (F# and C#).

19

Measures 19-20. Treble clef: Melodic line with eighth and quarter notes. Bass clef: Rhythmic accompaniment with eighth and quarter notes. Key signature: Two sharps (F# and C#).

21

Measures 21-23. Treble clef: Melody with eighth and quarter notes. Bass clef: Rhythmic accompaniment with eighth and quarter notes.

24

Measures 24-26. Treble clef: Melody with eighth and quarter notes. Bass clef: Rhythmic accompaniment with eighth and quarter notes.

27

Measures 27-28. Treble clef: Melody with eighth and quarter notes. Bass clef: Rhythmic accompaniment with eighth and quarter notes.

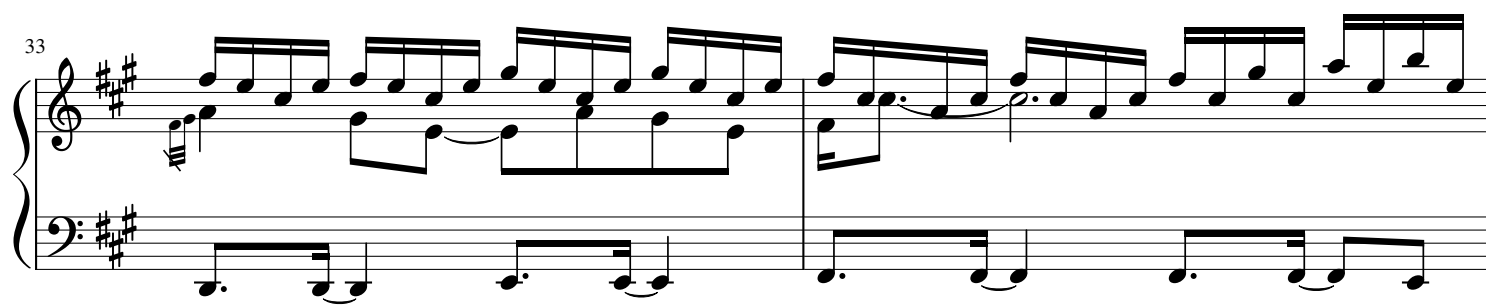
29

Measures 29-30. Treble clef: Melody with eighth and quarter notes. Bass clef: Rhythmic accompaniment with eighth and quarter notes.

31

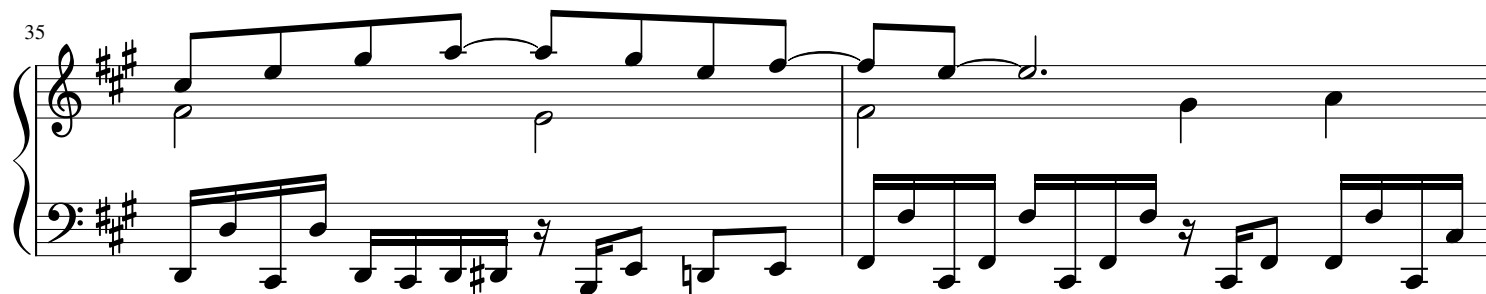
Measures 31-32. Treble clef: Melody with eighth and quarter notes. Bass clef: Rhythmic accompaniment with eighth and quarter notes.

33



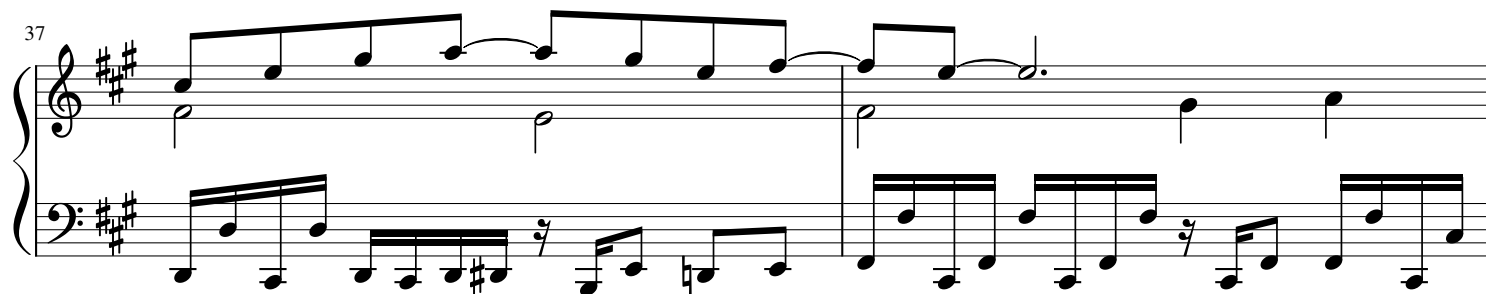
System 33: Treble and bass staves in D major. The treble staff features a continuous eighth-note melody. The bass staff provides a harmonic accompaniment with eighth and sixteenth notes.

35



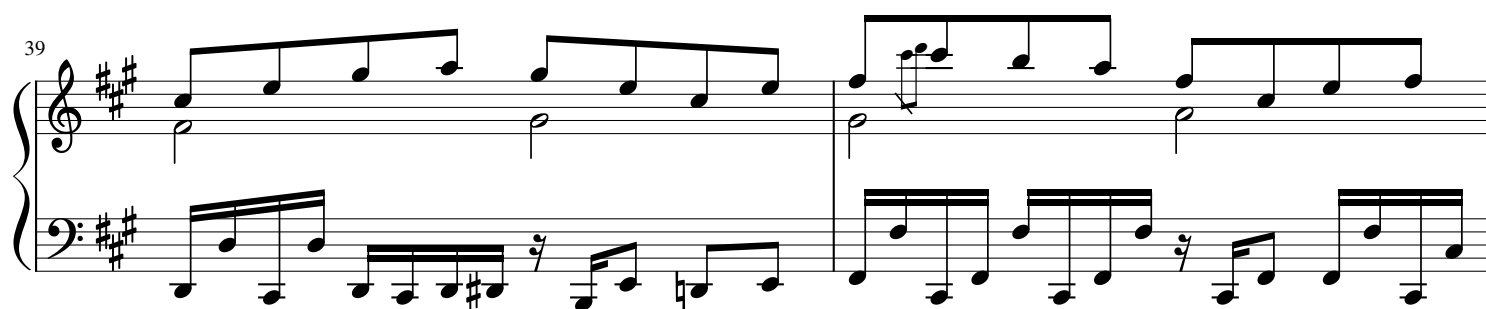
System 35: Treble staff continues the eighth-note melody. The bass staff has a more active line with sixteenth-note patterns and rests.

37



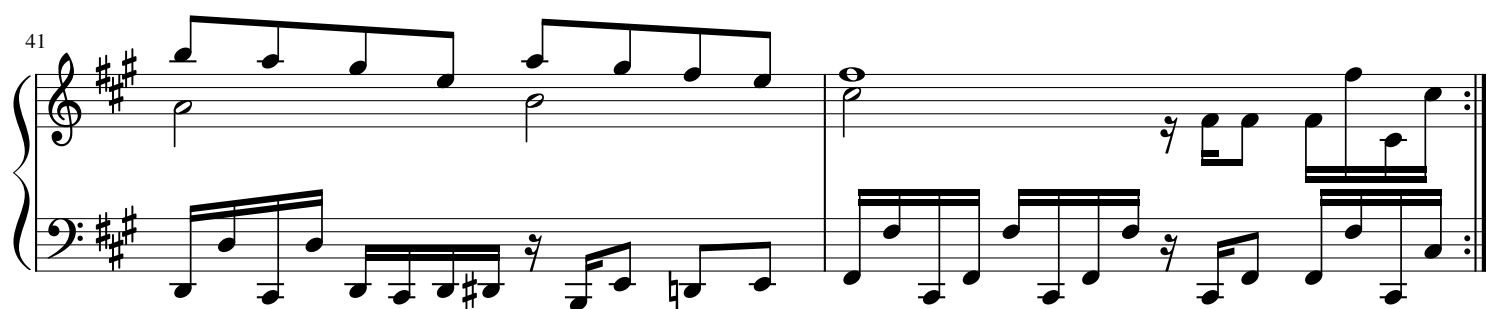
System 37: Treble staff continues the eighth-note melody. The bass staff continues with sixteenth-note accompaniment.

39



System 39: Treble staff continues the eighth-note melody. The bass staff continues with sixteenth-note accompaniment.

41



System 41: Treble staff continues the eighth-note melody. The bass staff continues with sixteenth-note accompaniment, ending with a double bar line and repeat dots.